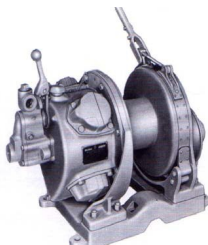


O'Quinn Enterprises, LTD.
1922 East Main Street
New Iberia, La. 70560
Phone: (337) 365-2089
Website: www.oeltd.com

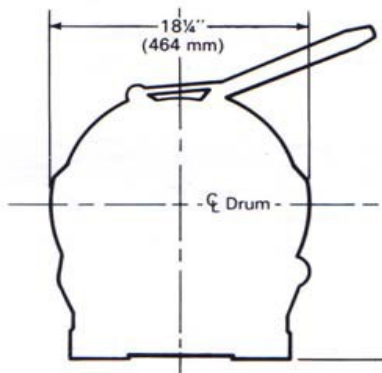


Ingersol Rand – H5UL 3,000 lbs. Capacity Air Winch

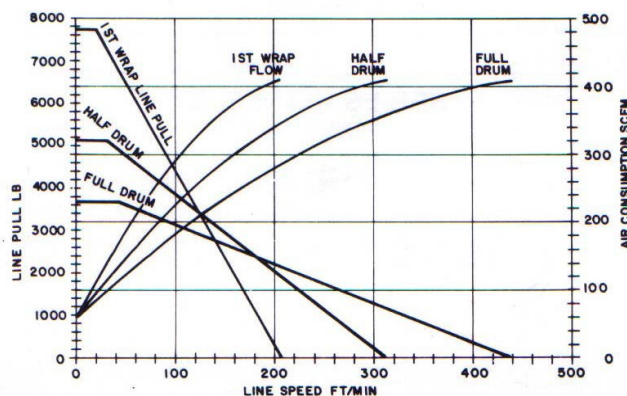


Winch Model: H5UL
Manufacture: Ingersoll Rand
Weight (lbs.): 598 (No Cable)
Drum Root Dia: 7"
Drum Length 15 13/16"
Motor HP: 14
Avg. CFM Required: 290
Line Pull (lbs.) 3,000 (Nominal Capacity)
Line Speed (fpm) 150
Max Stall Pull (lbs.) 7,800 (First Layer @90 PSI)
Wire Rope Dia.. (in.) 1/2", 3/8", 7/16"
Rope Anchor Hole Dia.: 11/16"
Full Drum Capacity 813' (1/2" wire rope)
1012' (7/16" wire rope)
1445' (3/8" wire rope)

**** Recommended working length is 80% rope capacity**

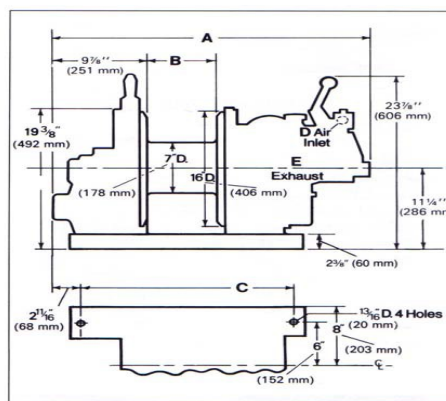


SERIES H5U-H5UL
90 PSI



Wire Rope Storage Capacities
 3/8" - 1445' Cable Strength 13,120 lbs.
 7/16" - 1012' Cable Strength 17,800 lbs.
 1/2" - 813' Cable Strength 23,000 lbs.

**** NOTE: Cable Strength is the Breaking Strength.
The Recommended safety factor for wire rope is;
Pulling - 3.5:1 Lifting - 5.0:1**



Dimensions:

A 40 15/16"
B 15 13/16+ "
C 30 3/8"
D 1.25 NPT