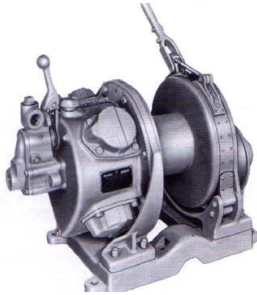


O'Quinn Enterprises, LTD.
 1922 East Main Street
 New Iberia, La. 70560
 Phone: (337) 365-2089
 Website: www.oeltd.com

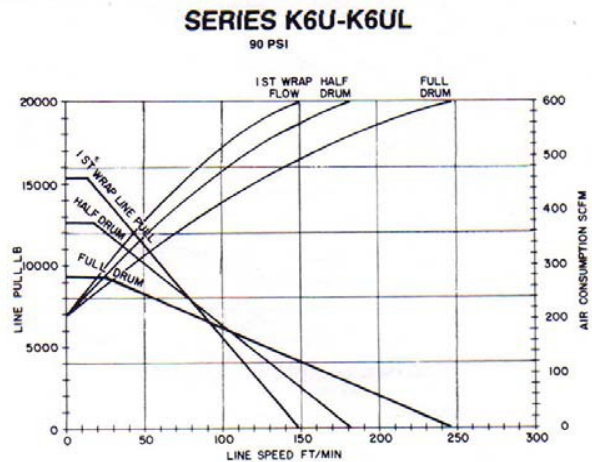


Ingersoll Rand - K6U 10,000 lbs. Capacity Air Winch



Winch Model: K6U
 Manufacture: Ingersoll Rand
 Weight (lbs): 1314
 Drum Root Diameter: 12 3/4"
 Drum Length: 12"
 Motor HP: 24
 Average CFM Required: 600
 Line Pull (lbs) (Nominal Capacity): 10,000
 Line Speed (fpm): 55
 Maximum Stall Pull (lbs): 15,000 (First Layer @ 90 PSI)
 Wire Rope Diameter (inches): 5/8", 3/4", 7/8"
 Rope Anchor Hole Diameter: 1"
 Full Drum Capacity:
 716' – 5/8" Wire Rope
 535' – 3/4" Wire Rope
 373' – 7/8" Wire Rope
 ** Recommended working length is 80% rope capacity

Wire Rope Storage Capacities

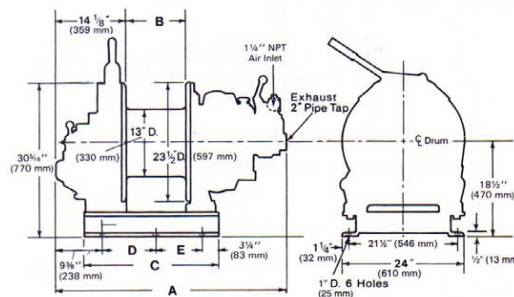


5/8" - 716' Cable Strength 35,800 lbs.
 3/4" - 535' Cable Strength 51,200 lbs
 7/8" - 373' Cable Strength 69,200 lbs.

** NOTE: Cable Strength is the Breaking Strength.
 The Recommended safety factor for wire rope is;
 Pulling - 3.5:1 Lifting - 5.0:1

** Nominal capacity rating complies with ANSI B30.7 for Base Mounted Drum Hoists. Provides 5:1 design factor based on the rated line pull.

SERIES K6U - K6UL



Dimensions:
 A = 46 1/2"
 B = 12"
 C = 26 7/8"
 D = 10 3/4"